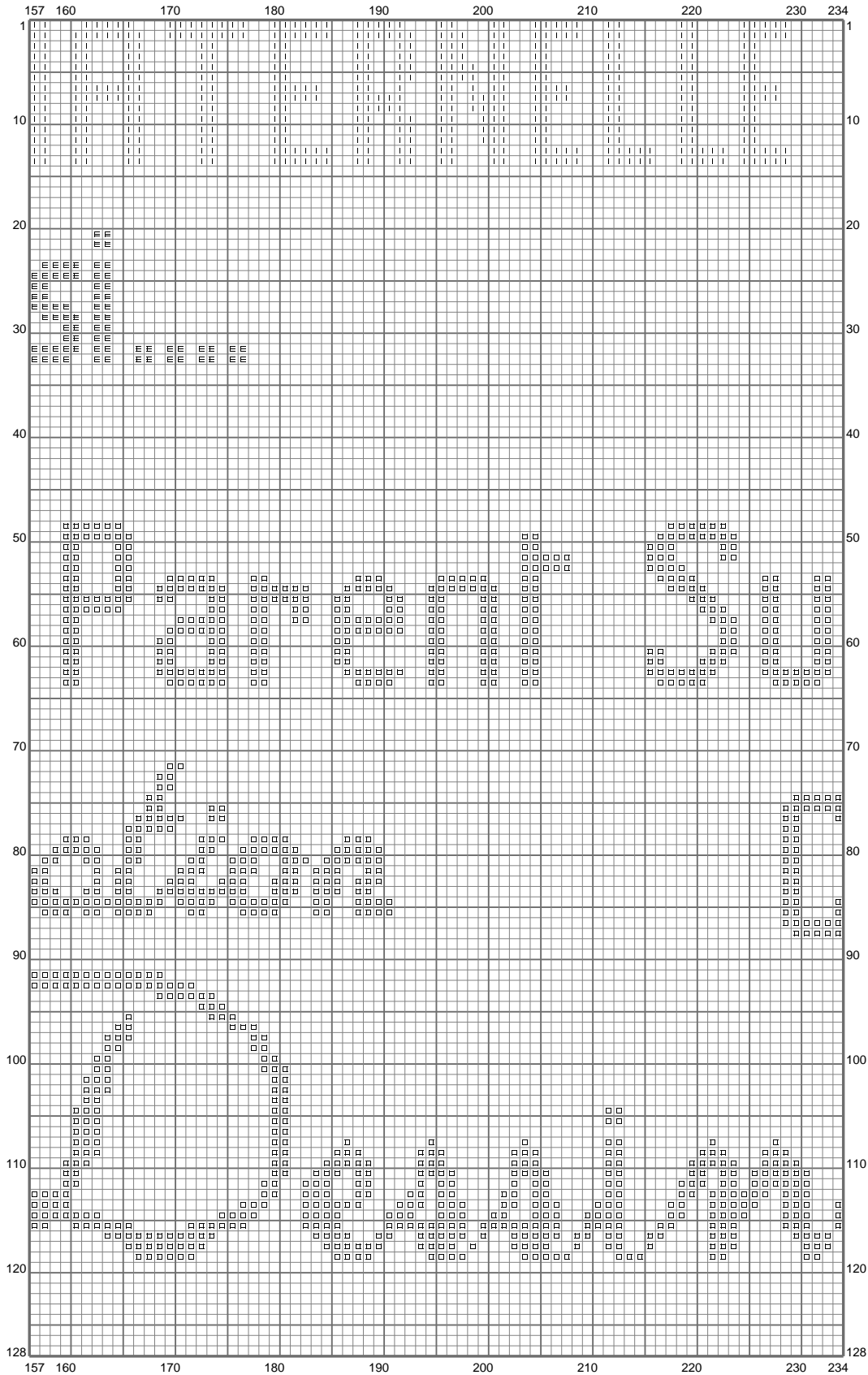
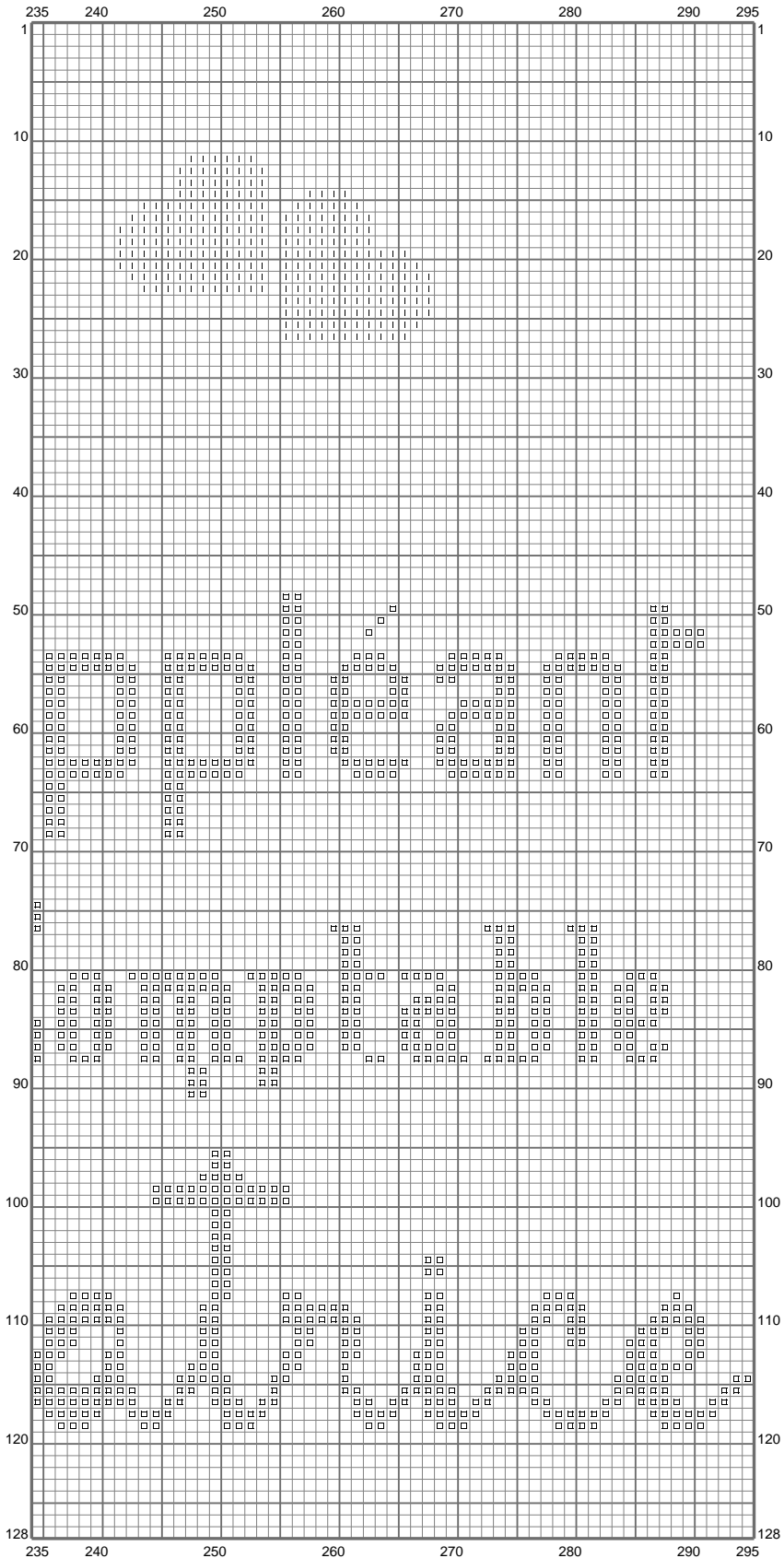


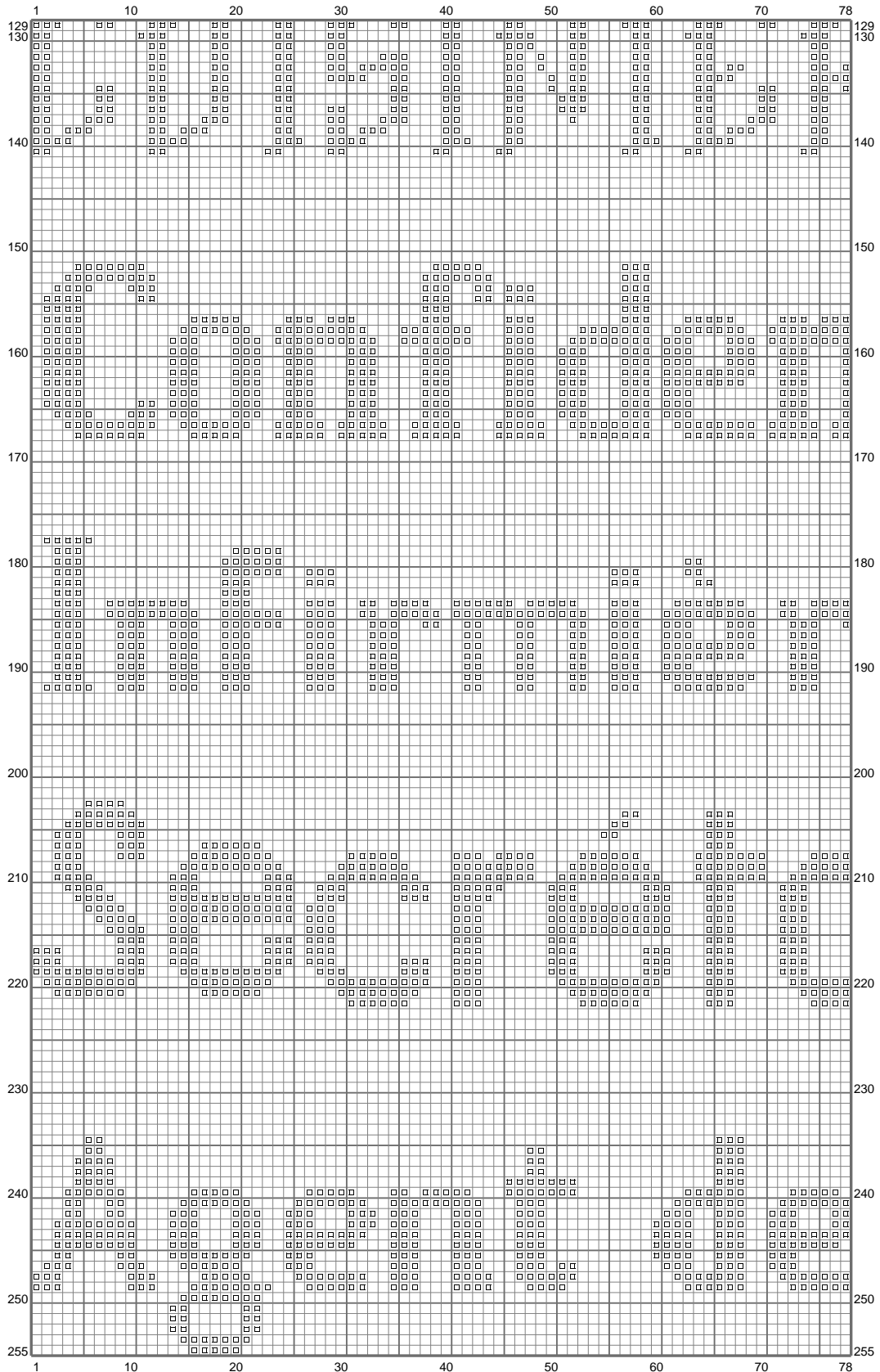
(This chart is printed using KG-Chart LE for Cross Stitch.)

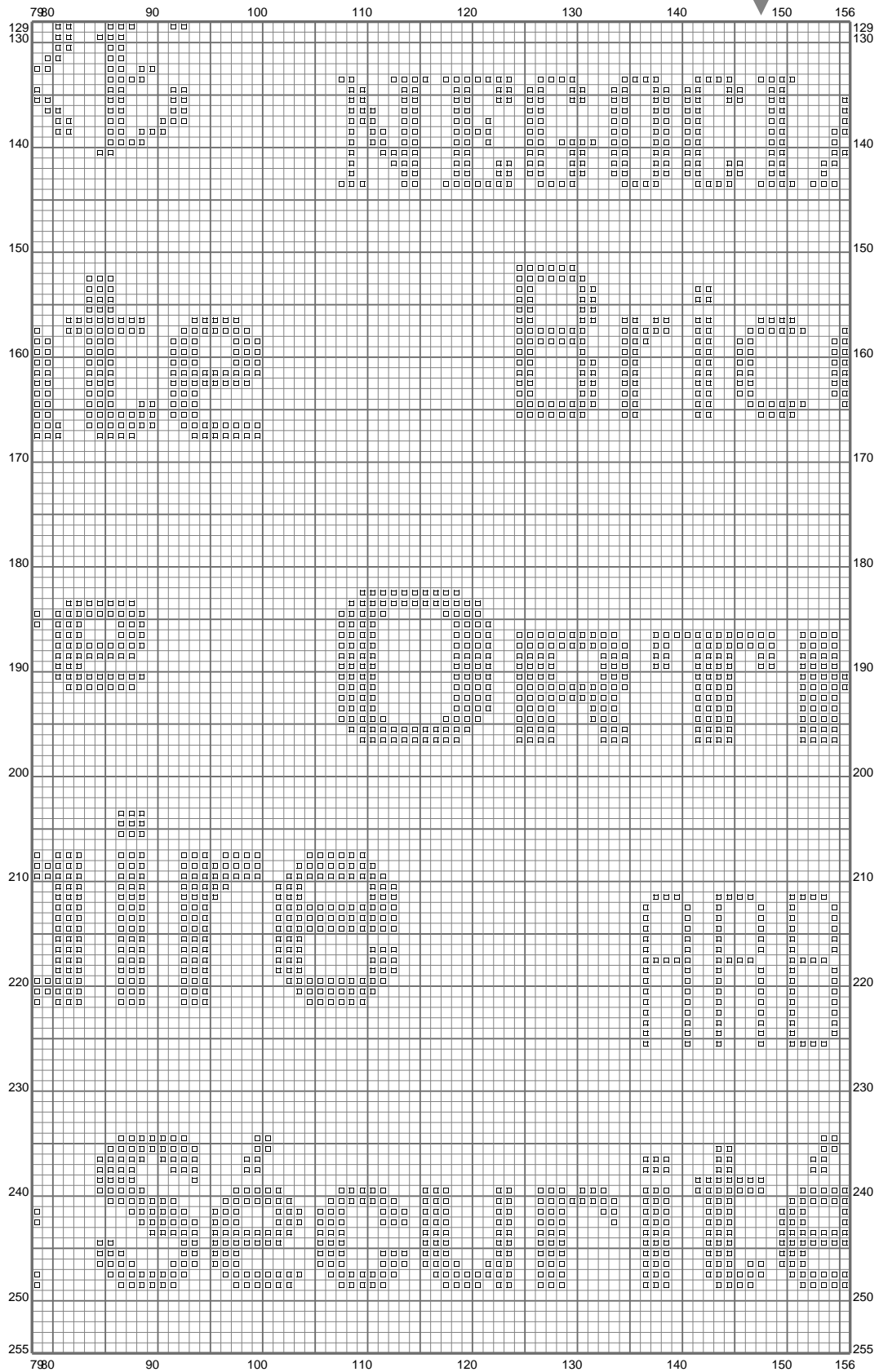


(This chart is printed using KG-Chart LE for Cross Stitch.)

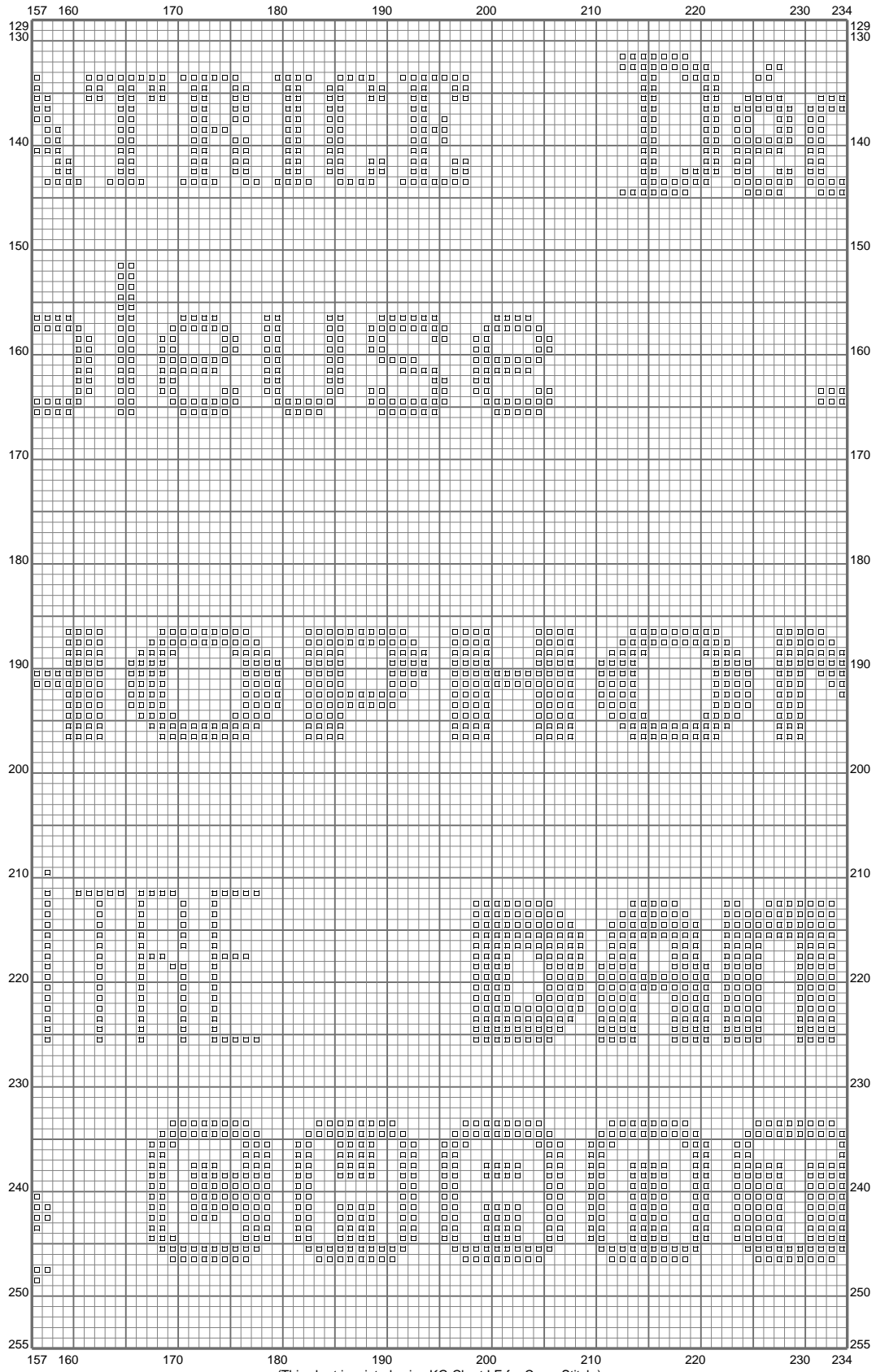


(This chart is printed using KG-Chart LE for Cross Stitch.)

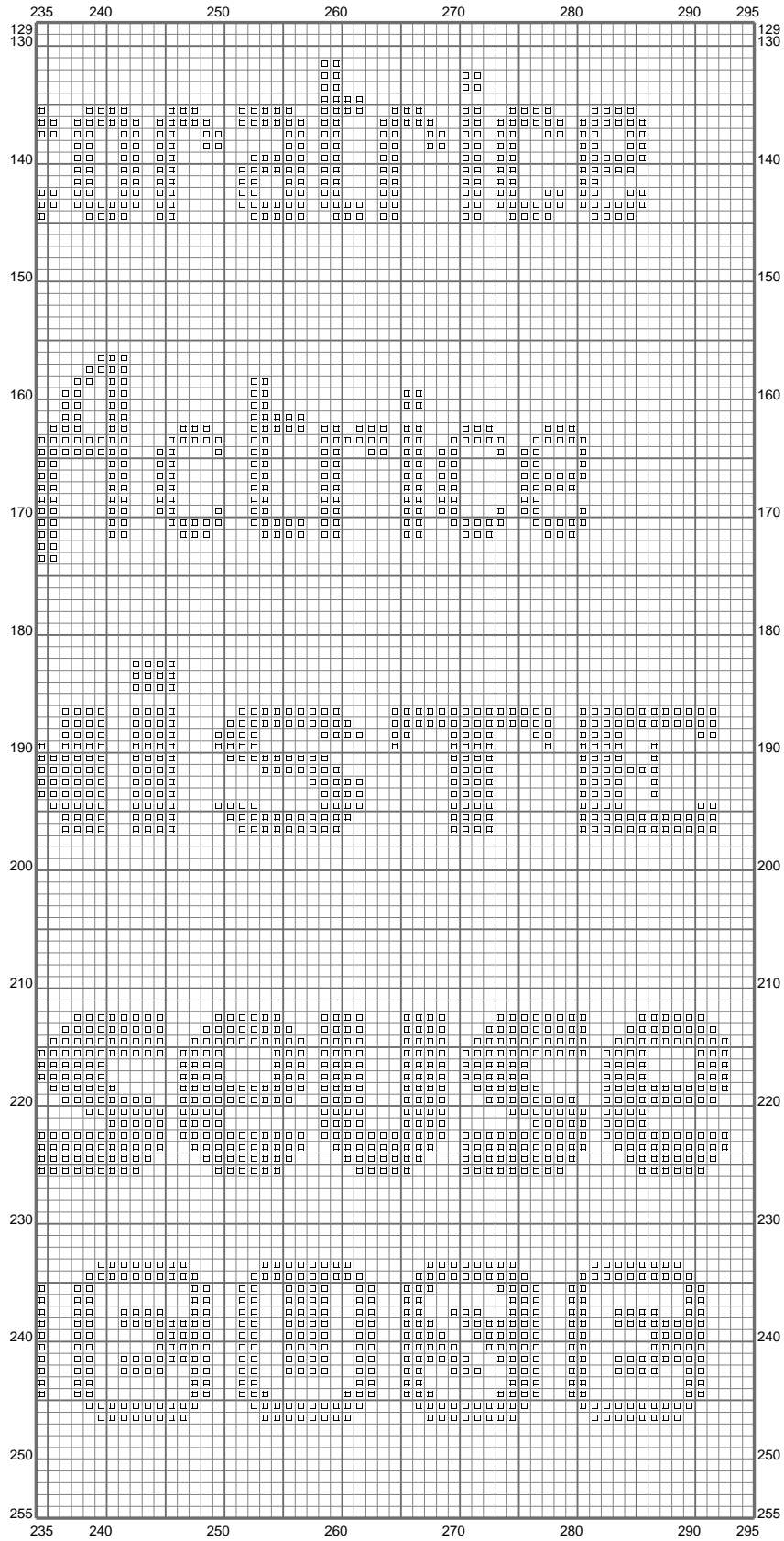




(This chart is printed using KG-Chart LE for Cross Stitch.)



(This chart is printed using KG-Chart LE for Cross Stitch.)







(This chart is printed using KG-Chart LE for Cross Stitch.)

Stitch Count: 295w x 255h
Finished Size: 32.57 cm x 28.16 cm (46 ct./inch)
Cloth: Aida
Cloth's Color: White
of colors: 4 Colors

Color Table (DMC)

Cross Stitch

	3807	(13030 ct)
	310	(358 ct)
	3807	(13030 ct)
	777	(1558 ct)