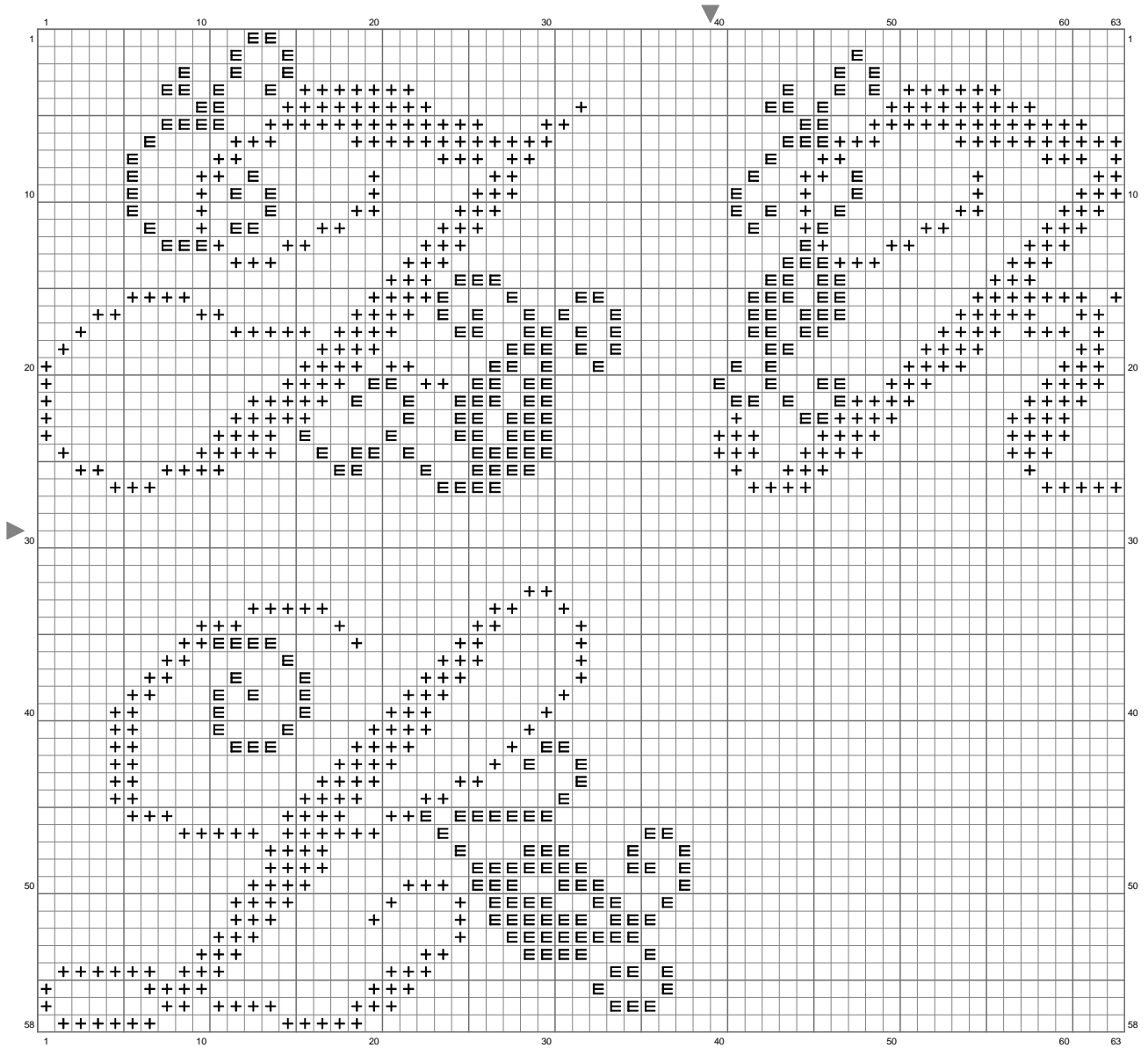
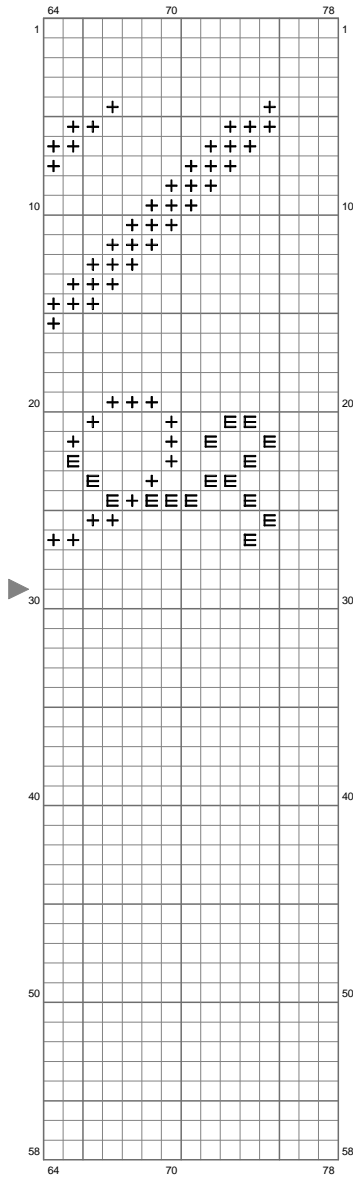


lettres jkl



(This chart is printed using KG-Chart LE for Cross Stitch.)

lettres jkl



(This chart is printed using KG-Chart LE for Cross Stitch.)

Stitch Count: 78w x 58h

Finished Size: 14.15 cm x 10.52 cm (28 ct./inch)

Cloth: Linen

Cloth's Color: White

of colors: 2 Colors

Color Table (DMC)

Cross Stitch

+	498	(579 ct)
E	3706	(274 ct)